

Facts about Human Trafficking

Trafficking survivors can be girls, boys, women, men, and trans people.

83% of trafficking victims in America are American citizens. (US Department of Justice)

Trafficking does not require international or state border crossing, although it often occurs.

Traffickers can be family members, significant others, acquaintances, managers, or employers.

Minor Specific Red Flags

- Significantly older boyfriend or friend
- Chronic runaway or truant
- Delinquency charges
- Homeless
- Special marked tattoos
- Substance Abuse
- Sudden change in child's behavior, school attendance, attire and/or material possessions



The Willow
DOMESTIC VIOLENCE
CENTER
SHELTER. HELP. HOPE.

24 hour hotline:

785-843-3333 | 800-770-3030

www.willowdvcenter.org

Human Trafficking Program Coordinator

785-331-2034

HumanTrafficking@WillowDVCenter.org

Se Habla Espanol - Other translation services available as needed.



fb.com/WillowDVCenter



[@WillowDVCenter](https://twitter.com/WillowDVCenter)

This grant project is funded by the Human Trafficking Victim Assistance Fund administered by The Office of The Kansas Attorney General. The opinions, findings, and conclusions or recommendations expressed in this publication are those of the author and do not necessarily reflect the views of The Office of The Kansas Attorney General.

**Resources for
Survivors of
Human Trafficking
and Exploitation**

**ALL KINDS OF
HELP.**

The Willow
DOMESTIC VIOLENCE
CENTER

SHELTER. HELP. HOPE.

So Many Ways to Help You

Safe Shelter

A confidential, healing environment for adults and children.

24 Hour Crisis Assistance

Available 24 hours a day, 365 days a year.

Support Services

Safety planning, basic needs, medical resources, and support groups for survivors of human trafficking. Assistance with housing, finances, employment, legal resources, and more.

Court Advocacy

Assistance navigating civil and criminal court, filing Protection from Abuse/Stalking Orders, attending court proceedings, and legal referrals.

Work Program

For adults and families meeting low-income guidelines or receiving cash assistance. Addresses trauma recovery while preparing for long-term employment.

Immigration

Assistance applying for and filing U-Visas and T-Visas.

Community Presentations & Workshops

Education and prevention workshops to faith communities, businesses, and community groups. Training for mental health providers, law enforcement, and other professionals.

ALL **KINDS** OF
HELP.

All services are free, confidential, and available to all survivors of human trafficking and exploitation who live in in Douglas, Franklin, or Jefferson County.

What is Human Trafficking?

A modern form of slavery. It involves controlling a person through force, fraud, or coercion to exploit him or her for forced labor and/or sexual exploitation.

Labor Trafficking The act of forcing a person to work for little or no money. It includes forced labor in underground markets and sweatshops as well as legitimate businesses such as hotels, nail salons, factories, restaurants, traveling sales crews, construction, farming, and landscaping.

Sex Trafficking The act of forcing, coercing, or transporting a person for the purpose of a commercial sex act. It can occur in residential brothels, strip clubs, via online escort services, brothels disguised as massage parlors, and street prostitution.

Force Physical and sexual assault, confinement, isolation.

Fraud False employment offers, lies about work conditions, withholding wages.

Coercion Threats, withholding legal documents, debt bondage.

Human Trafficking Checklist

- Have you been forced to perform sex acts for money?
- Have you been forced to do any kind of work against your will?
- Have you agreed to work, only to have your wages taken?
- At your workplace, are you unable to leave?
- Does someone control where you go and who you see?
- Are you working to pay off a large debt?
- Were you recruited through false promises about the type of work or working conditions?
- Have you been told not to tell anyone about your working conditions?
- Does someone insist on speaking for you?
- Does someone control your money, bank account, or identity documents?
- Does someone control where you live?
- Do you work long or unusual hours without a break?



The Willow
DOMESTIC VIOLENCE
CENTER
SHELTER. HELP. HOPE.

www.willowdvcenter.org

24 hour hotline:

785-843-3333 | 800-770-3030

Services Available For Minor Survivors of Sex Trafficking in Douglas County

Does your client express situations that are related to:

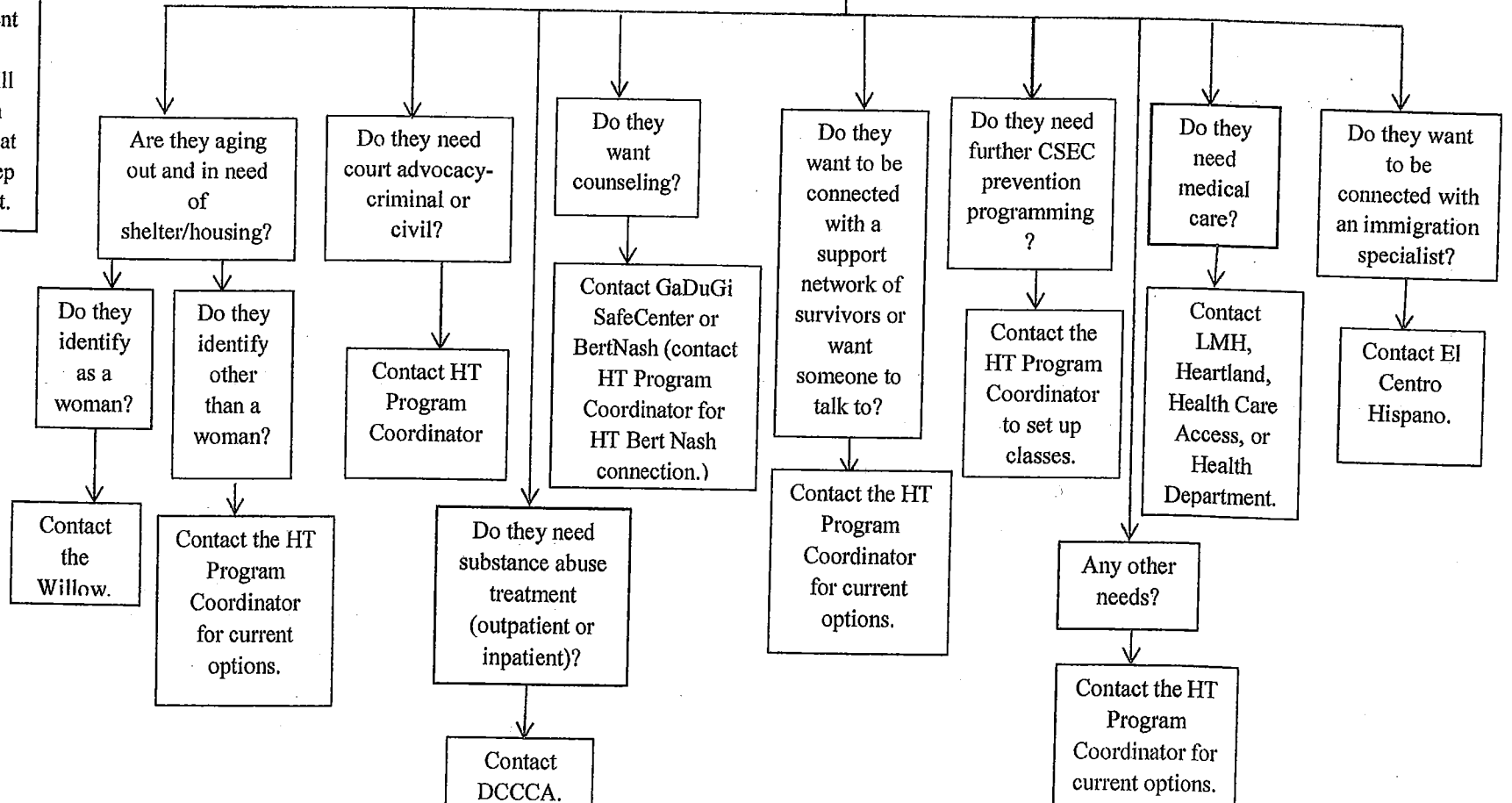
Commercial Sexual Exploitation of Children (CSEC)-sexual abuse and remuneration in money, goods, or services, or the promise of money, goods, or services-to the child or a third person or persons for the sexual use of that child (includes all commercial sex acts involving children under 18, whether or not a controlling party is involved)

Domestic Minor Sex Trafficking (DMST)-Recruiting, harboring, transporting, providing, or obtaining a child under 18 for a commercial sex

Are you the first identifier?

Contact 911. Also Contact Department of Children and Families. They will assess for human trafficking and what placement will keep the child the safest.

Has the minor already been identified as CSEC by police or DCF?



Numbers Referrals

Social Services/Mental Health Services	Medical Services	Shelter Services	Law Enforcement/Legal Services	Substance Abuse Services
DCF: 1-800-922-5330	Heartland Community Health Center: (785) 841-7297	Willow Domestic Violence Center: (785) 843-3333	911-Emergencies	DCCCA-Outpatient: (785) 830-8238
GaDuGi SafeCenter: (785) 843-8985	Health Care Access: (785) 841-5760	Lawrence Community Shelter: (785) 832-8864	Kansas Legal Services: (785) 233-2068	DCCCA-First Step: (785) 843-9262
Anti-Human Trafficking Program Coordinator: (785) 979-2414	LMH: (785) 505-5000			
Bert Nash: (785) 843-9192	Health Department: (785) 843-3060			
El Centro Hispano: (785) 843-2039				

Have questions, comments, or concerns? Need referrals for further services? Call the Human Trafficking Program Coordinator at the Willow Domestic Violence Center: efinn@willowdvcenter.org, 785-979-2414